

SELVATELLINO

Country residence with various self-contained apartments

Large shared pool, gardens & panoramic views

Casole d'elsa (between San Gimignano & Siena)

Selvatellino is an ancient cluster of farmhouses completely modernized yet keeping all the charm of days goneby, ready to welcome you within peaceful surroundings in full harmony, ideal for walks in the nearby woodlands, trekking etc. Located just off route 541 that joins Colle Val d'Elsa to Radicondoli, only 2 km from the nearby village of Pievescola on the Montagnola Senese. Discover gorgeous countryside and taste delicious wines in the heart of Tuscany

The Chianti territory with its hilly countryside of incomparable beauty lies in the very heart of Tuscany within a few kilometers you can easily reach historical towns and villages such as Casole d'elsa 6 km, Colle val d'Elsa 14 km, Monteriggioni 16 km, San Gimignano 28 km,, Siena 32 k, Florence 56 and a wide variety of lesser known destinations such as San Galgano (28 km) with its famous Abbey and the sword in the Within a short distance you'll find a delicatessen shop & restaurant, whilst other restaurants can be found within 2 to 4 kms. Also within a few kilometers you could visit Montepulciano, Pienza and Montalcino, jewels of the Tuscan countryside..

All local informations are availabe at reception and from a book which you'll find in every apartment- Relax by the large pool (14x7mt) or read a book under the large gazebo or even enjoy a barbecue with other guests. Large parking area



Panoramic view

(continues...)



2 - rooms apartment for 2/3 pax. Ground floor. 39 sq.mt GAZEBO

Attractively furnished apartment with a lovely covered patio-terrace with table and chairs, facing the pool area. Living room with single divan bed and door to patio. Open plan kitchen (4 electric hobs and oven, fridge/freezer). 1 double bedroom, Shower/WC. Satellite TV. Barbecue.



2 rooms apartment for 2/4 pax. Ground floor 58 sq. mts. GIULIA

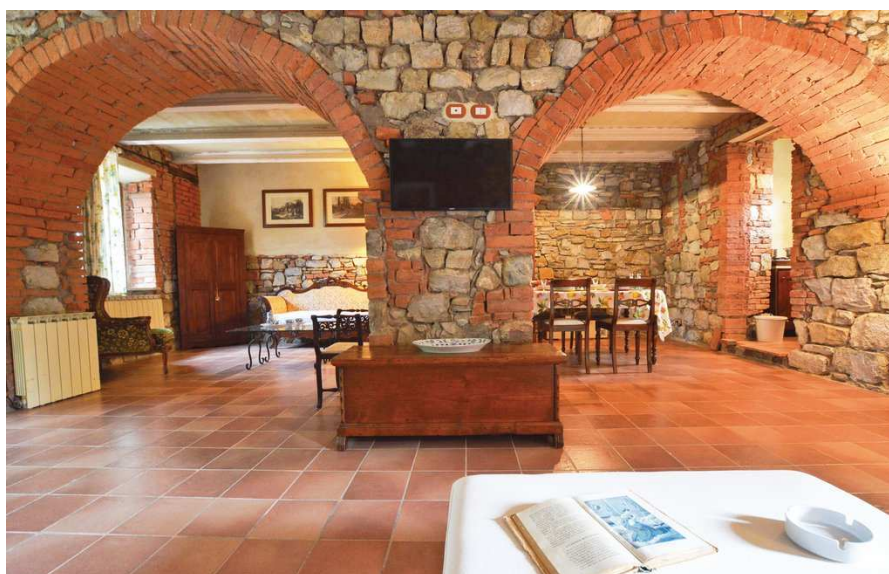
A charming ground-floor apartment with wood beams and two sun terraces, one of which, with table and chairs, faces the pool area. Attractive and newly furnished throughout. Living/dining room with double sofa-bed with breakfast bar (4 gas hobs and oven, fridge and separate freezer, dishwasher). 1 double bedroom. Bathroom with shower shower/WC. Washing machine. Satellite TV.

(Continues..)



3 rooms apartment for 4/5 pax. First floor 65 sq. mts. GIOVANNA

First floor apartment with its own private gazebo in the garden with table and chairs for outdoor eating, bordering onto sunflowers fields. Living-dining room with single sofa bed and open plan kitchenette (4 gas hobs, electric oven, fridge & separate freezer, filter coffee machine, toaster). 1 double bedroom, 1 twin bedroom (both with attractive countryside views). Shower/WC. Satellite TV. Doors to a small balcony shared with apt. Laura #5 - next door.



3 rooms apartment for 6 pax. Ground floor 85 sq. mts. ALESSANDRA

An extremely spacious ground floor apartment with patio terrace enjoying attractive panoramic views, furnished with style and elegance. Baronial living room with double sofa bed and access to a compact kitchen, one double bedroom and one twin bedroom with balcony. Bathroom with tub and hand shower. Washing machine